

Decommissioning of Libraries Australia Free Search

From the end of November 2009 the Libraries Australia free service will be replaced by Trove. Trove is a new discovery service focused on Australia, Australians, and items found in Australian collecting institutions. It will provide a single point of access to resources currently discoverable via the National Library of Australia's multiple discovery services, and to digitised material freely available online anywhere in the world.

Currently, both the Libraries Australia free service and the enhanced (subscription) service share the same web address - <http://librariesaustralia.nla.gov.au/>. After the release of Trove, this web address will provide access to the enhanced (subscription) service only. Non-subscribers who arrive at this page will be able to search Trove directly, either by clicking on a hyperlink or entering their search terms in the Trove search box.



The URL for Trove will be <http://trove.nla.gov.au>

Records in Trove are a copy of the records in the Australian National Bibliographic Database (including the Register of Australian Archives and Manuscripts, and Music Australia), Picture Australia, Australian Research Online, Australian Newspapers 1803-1954 and PANDORA. Some external data sources will also be available.

Libraries Australia Free Service – after Trove

- The Libraries Australia link from the National Library of Australia's home page will direct users to the Trove home screen to commence their search.



- A new Trove embedded search box will be made available to replace the Libraries Australia search box. Searches executed from this search box will present users with search results from Trove. If you currently have the Libraries Australia search box appearing on your website you won't need to make any changes. This box is placed on your organisational or personal website to help your visitors find and get items from Trove.

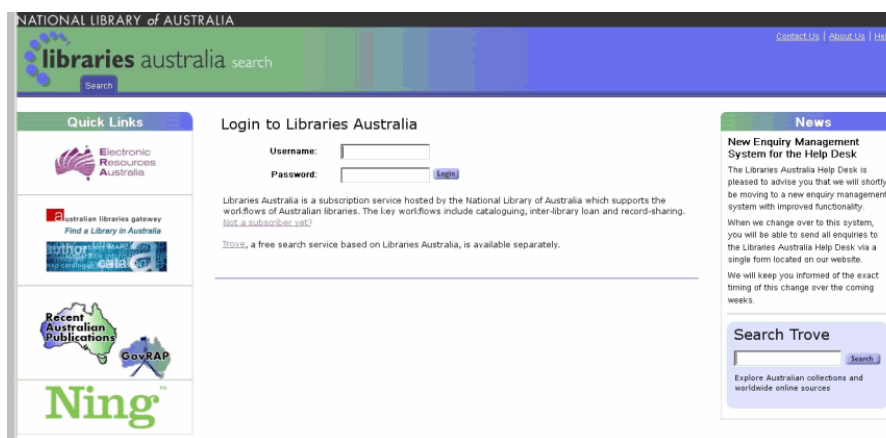
Libraries Australia Enhanced (Subscription) Service – after Trove

Unchanged

- Those libraries that currently have access to Libraries Australia enhanced (subscription) service via a login and password will be presented with the Login to Libraries Australia screen.
- If your library uses IP authentication or a scripted login, you will still be taken directly to the enhanced service search screen.
- Z39.50 gateway will continue to operate for enhanced (subscription) users (using existing authentication).

Changed

- Construction of URLs to perform a search in Libraries Australia will only be accessible to subscribers. Subscribers will be presented with the Login to Libraries Australia screen before being able to view their search results.

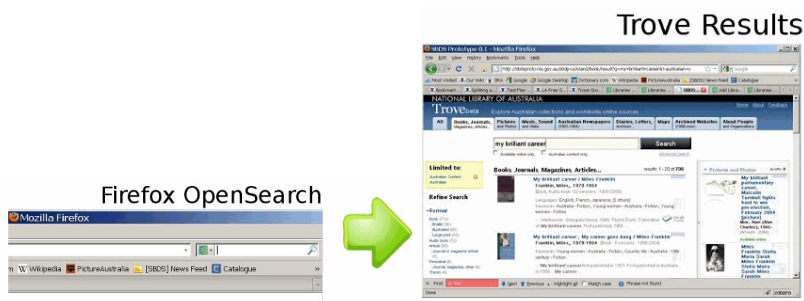


- Permalinks in records will be renamed to “Cite This” and will link to the same record in Trove, jumping straight to the record within the work.
- Librarians, who currently search Libraries Australia on behalf of their patrons and send them a list of links to records in Libraries Australia, will need to search Trove instead.
- No permalinks will be provided for external data sources.

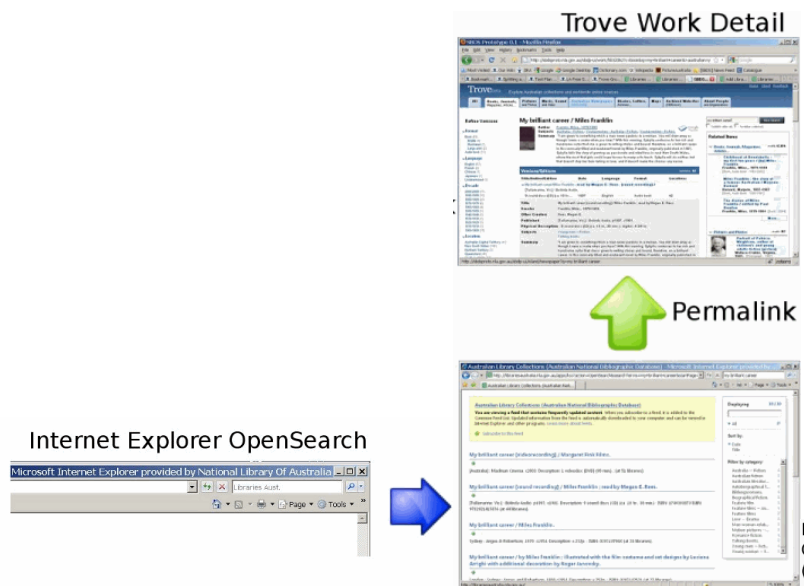
Other Functionality Changes

The following changes will automatically take effect during November.

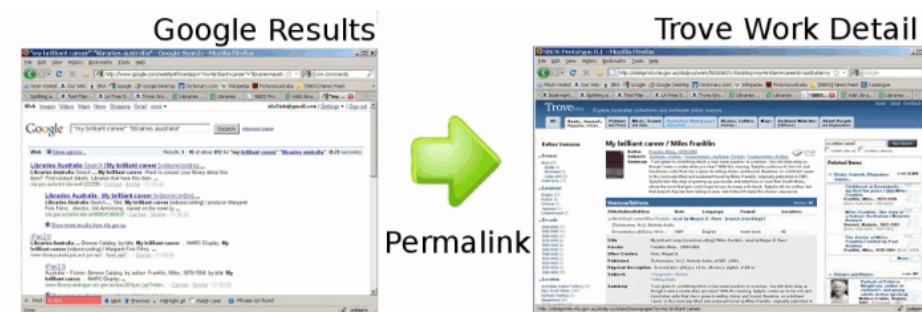
- Constructed URLs (for freenbd) will be re-directed to the results screen in Trove.
- OpenSearch results using Firefox as the default browser will be re-directed to the results screen in Trove.



- OpenSearch results using Internet Explorer will be presented in a styled XML page with Permalinks to individual items in Trove from within the results display.



- Items retrieved from a Google Web or Scholar search will have a Permalink to the item in Trove.



All decommissioning of the Libraries Australia Free Search Service is expected to be completed by the end of November 2009.