

An Inventive Magic

DONALD FRIEND AND HIS DIARIES

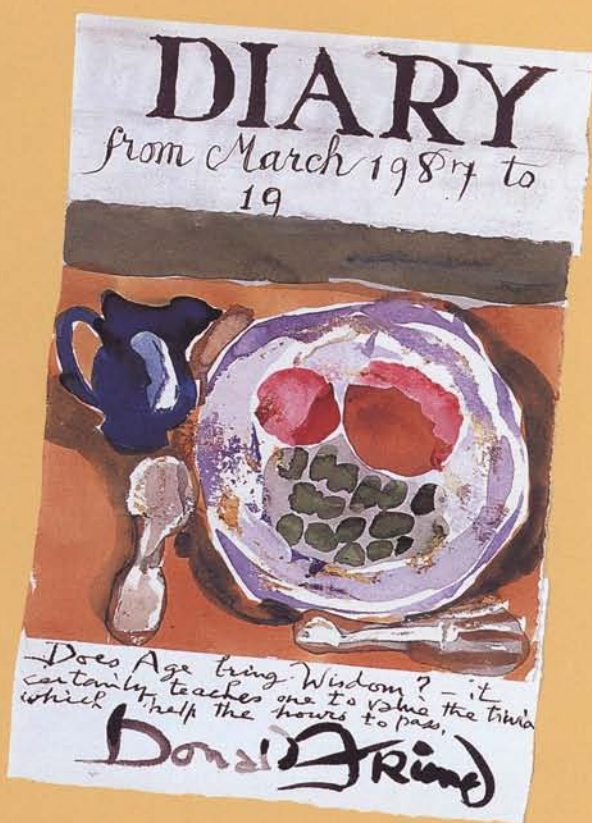
FRIDAY AND SATURDAY, 23–24 FEBRUARY 2001

NATIONAL LIBRARY THEATRE, CANBERRA

Painter, draughtsman, printmaker, sculptor, illustrator, genius, rascal—Donald Friend's life attracted as much comment as his work. Born in 1915, he was one of Australia's leading modern artists, mentioned in the same breath as Russell Drysdale and William Dobell. Yet he became as famous for the luxurious life he led in Bali, where he lived and worked from 1966 to 1980, as for his work as a visual artist. Until his death in 1989, Friend recorded his life and the lives of the people around him in over 40 diaries. From the age of 14, when he began his first diary, he also demonstrated great talent as a writer. In his extraordinary, witty, and often self-mocking diaries, Friend provides a revealing account of more than four decades of Australian life and culture.

This fascinating conference will explore Donald Friend's artistic and personal life, and the people and places he associated with. It will examine his life in Bali and his interest in Balinese art. The conference will also look at Donald Friend's writings, particularly those in his substantial diaries, which are held by the National Library of Australia. The conference is aimed at the general public and interested scholars.

Eminent participants include Anna Gray (editor of the Library's Donald Friend Diaries publishing project), Sasha Grishin, Lou Klepac, Barry Pearce, John Thompson, Gavin Wilson, Ian Stocks, Christine France, John Moyle and John McDonald.



Donald Friend (1915–1989)

Title page of Diary for 1987

pen and ink and watercolour; 33.5 x 24.1 cm

Manuscript Collection

FOR FURTHER INFORMATION, please contact Louise O'Brien
(Events Coordinator, Public Programs, National Library of Australia)

tel: (02) 6262 1289 email: lobrien@nla.gov.au

NLA CONFERENCE