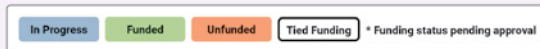


Library Pillar	Business Capabilities	Strategic Priorities	Strategic Roadmap			
			Year 2022	Year 2023	Year 2024	Year 2025
Collect	<ul style="list-style-type: none"> Process Automation Digital Collecting Cognitive Technologies 	<ul style="list-style-type: none"> Streamline collection workflows for more comprehensive collecting. Collect new and emerging digital material and formats. Augment the Library's workforce capability for increased pathways to search and explore. 	<ul style="list-style-type: none"> Library Management System Replacement * Product - Web Archiving Product - National Edeposit (NED) Product - Digitisation Product - Collection Systems 			
			<ul style="list-style-type: none"> Library Discovery System Replacement Product - Engagement 			
			<ul style="list-style-type: none"> Trove Infrastructure Trove Researcher Portal Treasured Voices Commercial Data Proof of Concept Product - Digitisation Product - Trove 			
			<ul style="list-style-type: none"> Disaster Recovery Proof of Concept Containerisation Cybersecurity Enhancements Digital Workspace (Desktop Refresh) Digital Workspace (Sharepoint) Product - Corporate and Information Management KPI Project New Server Room 			
Connect	<ul style="list-style-type: none"> Audience-Centric Digital Engagement 	<ul style="list-style-type: none"> Support for a digital-first data-driven engagement strategy delivering better services to contemporary Australian communities. 	<ul style="list-style-type: none"> Analytics Platform 			
Collaboration	<ul style="list-style-type: none"> Sustainable Digital Infrastructure Scalable Digital Infrastructure 	<ul style="list-style-type: none"> Ensure continuation of low-cost infrastructure, digitisation systems, NED and Trove. Prepare and be ready to build next-generation shared NCI Infrastructure. 	<ul style="list-style-type: none"> Trove Metadata Engine Replacement 			
			<ul style="list-style-type: none"> Product - Digitisation Product - Trove 			
Capability	<ul style="list-style-type: none"> Cybersecurity Risk Mitigation Redundant and Resilient Infrastructure Digital Workplace Digital Workforce 	<ul style="list-style-type: none"> Lift cybersecurity maturity. Operationalise digital business continuity and disaster recovery infrastructure. Uplift digital and data capabilities, develop communities of practise, and deliver self-service. 	<ul style="list-style-type: none"> Product - Corporate and Information Management 			
			<ul style="list-style-type: none"> KPI Project 			



Enabling Changes

- Governance
- People and Culture
- Enterprise Architecture

Key Dependencies and Risks

- Streamlining workflows requires setting clear business goals, indicators of success and cultural change.
- Collecting new and emerging digital content requires continuous improvement, iterative development and risk tolerance.
- Sustaining and scaling requires an agreed enterprise architecture, overcoming technical debt/complexity, clear corporate priorities and an implementation roadmap.
- Protecting the digital collection and digital services requires continued investment in cybersecurity and infrastructure resilience.
- Digital workplace and data capability requires investment in tools and staff retention/upskilling.
- Product-centric delivery requires new ways of working and adjusting roles and responsibilities across multiple business functions.
- Collaboration with NCIs, NSLA and organisations nationally requires national leadership, shared infrastructure and significant ongoing investment.

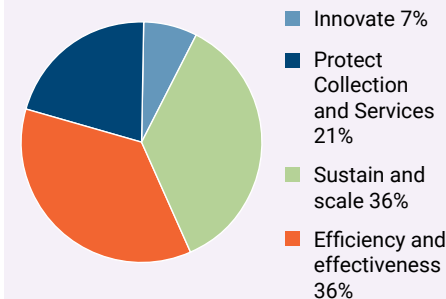
- Product Management and Service Catalogue
- Data governance, stewardship and communities of practice
- Enterprise Architecture

Metrics/KPIs

- Collect**
 - # published/unpublished works collected
 - % growth in web archive collection
- Connect**
 - # digital visits to the Library
 - % of total collection available to the public online
 - # images added to Trove
- Collaboration**
 - # Trove Collaborative Services partnerships
 - % of systems adhering to enterprise architecture
- Capability**
 - % availability of Library and Trove websites
 - YoY number and/or cost of cybersecurity incidents

Investment Portfolio

Current investment Level by Objective

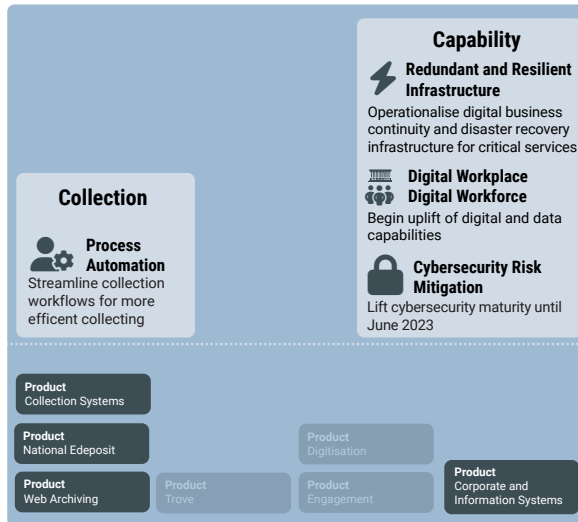


Digital Strategy 2022 Resourcing Scenarios

Whole of government shared solution

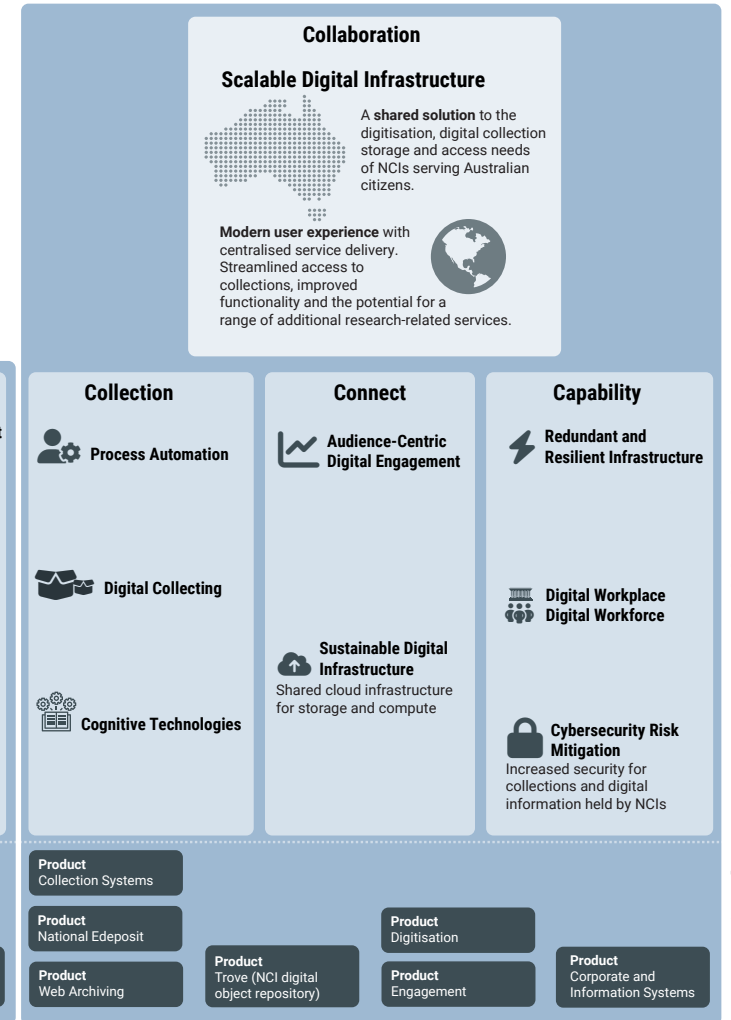
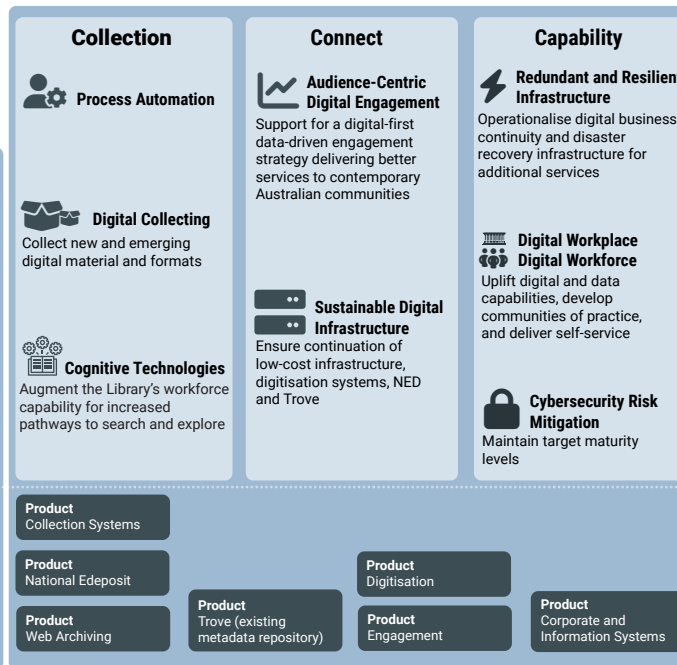
Base Library appropriation increase
Significant investment shared digital infrastructure

Current base funding with short-term tied funding



Minimum sustainable funding

Funded product delivery and support teams
Funding to support Infrastructure uplift and sustainability



Capability and Strategic

Operational

Enabling

Enterprise Architecture

Product Management Operating Model

Data Governance, Stewardship, and Communities of Practice